



## How to Apply an Nprint Transfer

Place the garment on the heat press. Make sure it is aligned properly.

Place the Ntrans transfer where you want it on the garment. Make sure the transfer is paper side up/ink side down with the ink touching the garment. The instructions on the other side of this sheet will help ensure proper placement.

### Press at these specs:

Please note: Temperature and psi may vary from heat press to heat press. We recommend doing a test application to ensure heat and pressure are correct before proceeding with your production run. Some small adjustment may be required.

Heat: 380 degrees F.

Pressure: Medium to heavy pressure (depends on press used, but approximately 60-80 psi)

Time: 40 seconds

### Specs for a top and bottom heat automatic heat press:

Top Heat: 350 degrees

Bottom Heat: 100 degrees

Pressure: 30 psi

Time: 40 seconds

As soon as the press released, take a small rubber roller and, applying steady pressure, make several back and forth passes across the entire transfer.

Wait 30 seconds for the transfer to cool and then slowly peel the paper backing off. The logo should be adhered to the garment.

Your garment is now complete.

### Washing Instructions:

Do not exceed 204 degrees when washing any garments with Ntrans logos or designs

### Ntrans is recommended for the following fabrics:

Knitted Fabrics    Cotton Fabrics    Linen Fabrics    Polyester Fabrics    Poly Blend Fabrics

### It is not recommended for:

Woven Nylon Fabrics    Lycra Fabrics



Quality, service and delivery on which you can rely  
**Why would you order your transfers from anyone else?**

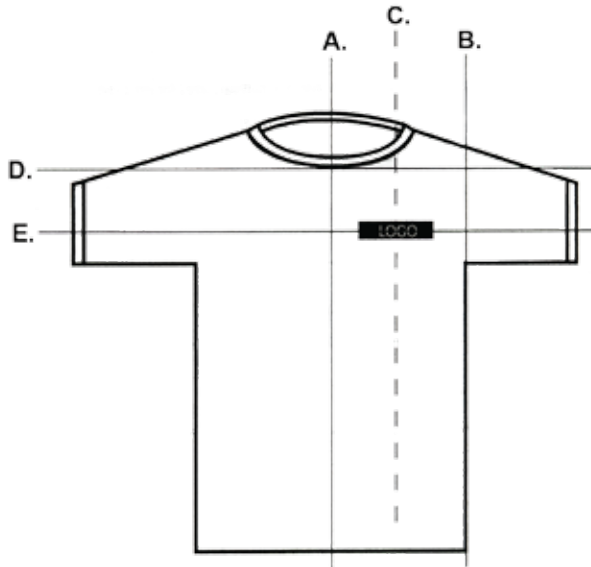
For more information, contact EnMart at **1-866-516-1300** or visit us online at **[www.mymart.com](http://www.mymart.com)**

## Logo left chest

Adult sizes:

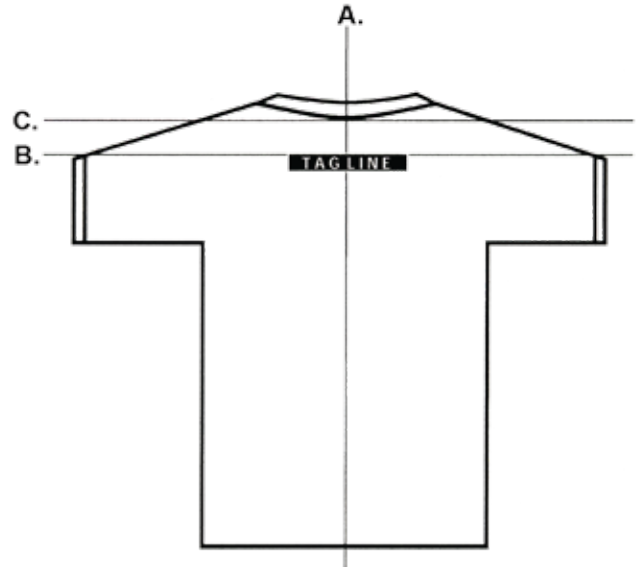
L, XL, XXL

- A. Center of shirt
  - B. Armpit vertical
  - D. Bottom of collar
  - E. Center of logo
  - C. Center of logo between A & B
- Distance between D & E = 5 ½ inches down from bottom of collar to the center of design.



## Tag Line Back of Shirt

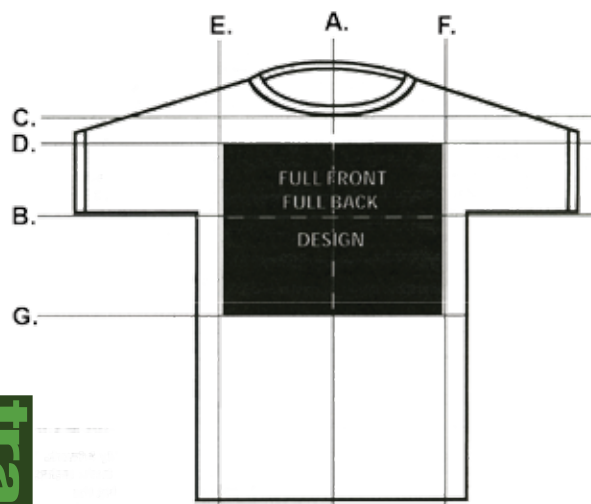
- A. Center of shirt
- B. Top of Tag Line
- C. Bottom of Collar
- D. Three to four fingers below the collar or approximately 2 ½ inches below the collar to the top of the tag line.



## Full Front & Full Back Design - Adult

- A. Center of shirt
- B. Armpit horizontal
- C. Bottom of collar
- D. Top of design
- G. Bottom of design

Center full front or full back design horizontally between left and right armpits, E & F. Center design vertically on B. Distance between C & D = 2 ½ to 3 inches or three to four fingers. Distance will vary depending on size of shirt.



## Sleeve Print

- A. Edge of sleeve
  - B. Bottom of sleeve design
  - C. Center of shoulder seam
  - D. 2 inches from A to B.
- Center sleeve design print on shoulder sleeve

